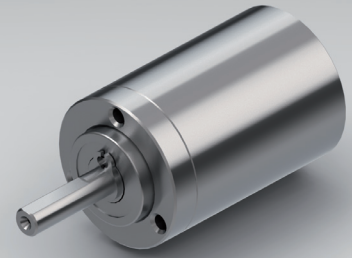


PLANETARY GEARBOX GPL016

stainless steel version



		1-STAGE		2-STAGE		3-STAGE			
Ratio i:1	Max. motor shaft- $\varnothing D$	Ratio i:1	Max. motor shaft- $\varnothing D$	36	5	Ratio i:1	Max. motor shaft- $\varnothing D$		
				48	5				
				64	3				
		9	5	84	5				
		12	5	112	3				
3	5	16	3	147	5				
4	3	21	5	196	3				
7	1	28	3	343	1				
Max. rated torque continuous		Nm		0.1		0.3		0.5	
Max. efficiency at max. rated torque continuous		%		90		85		80	
Average backlash at no load		arcmin \leq		20		35		50	
Weight without adapter plate		g		20		25		30	
Dimension L		mm		18.5		23.5		28.5	
Dimension A		mm				3			
Dimension B		mm				7.2			
Max. radial load		F_R	5 mm from shaft end	N		30			
Max. axial load		F_A		N		10			
Max. continuous rated speed at drive				min ⁻¹		6000			
Max. intermittent rated speed at drive				min ⁻¹		10000			
Temperature range		Type Standard		°C		-30 / +90			
Temperature range		Type V		°C		-40 / +90			

Standard scope of delivery Gearbox lubricated for duration of service life, dust-proof package, motor pinion and assembly instructions (adapter plate optional).

Customized versions also available for small quantities.

Type V = heavy duty version

Changes reserved © GYSIN AG | 05/2015