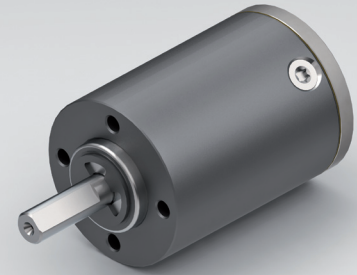


PLANETARY GEARBOX GPL026



		1-STAGE	2-STAGE	3-STAGE	
Ratio i:1	Max. motor shaft-ØD	Ratio i:1	Max. motor shaft-ØD	Ratio i:1	Max. motor shaft-ØD
				81.37	4
				112.67	4
				143.97	4
		18.78	4	199.33	4
3.5	4	26	4	216	2
4.33	4	33.22	4	276	2
6	2	46	2	352.67	2

Standard scope of delivery Gearbox lubricated for duration of service life, dust-proof package, motor pinion, mounting screws, paper gasket and assembly instructions (adapter plate optional).

Customized versions also available for small quantities.

Stainless steel version on request.

Rated torque continuous	Type Standard	Type R	Nm	0.3	1	3
Rated torque intermittent	Type Standard	Type R	Nm	0.6	2	6
Rated torque continuous	Type V		Nm	0.6	2	3
Rated torque intermittent	Type V		Nm	1.2	3	6
Max. efficiency at rated torque			%	90	85	80
Average backlash at no load	Type Standard	Type V	arcmin ≤	20	35	50
Average backlash at no load	Type R		arcmin ≤	10	20	30
Weight without adapter plate			g	70	90	115
Dimension L			mm	25	33	41
Dimension A			mm	5		
Dimension B			mm	14		
Max. radial load	F _R	7 mm from shaft end	N	50		
Max. axial load	F _A		N	40		
Max. continuous rated speed at drive			min ⁻¹	6000		
Max. intermittent rated speed at drive			min ⁻¹	10000		
Temperature range	Type Standard	Typ R	°C	-30 / +90		
Temperature range	Type V		°C	-40 / +90		

Type V = heavy duty version | Type R = reduced backlash version

Changes reserved © GYSIN AG | 05/2015