

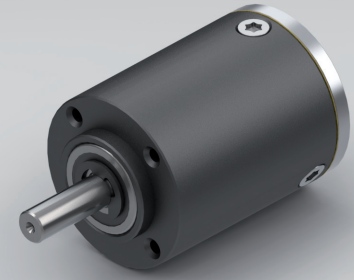
motor mounting

Standard scope of delivery Gearbox lubricated for duration of service life, dust-proof package, motor pinion, mounting screws, paper gasket and assembly instructions (adapter plate optional).

Customized versions also available for small quantities.

Stainless steel version on request.

PLANETARY GEARBOX GPL032



| | | 1-STAGE | 2-STAGE | 3-STAGE | | |
|--|---------------------|---------------------|---------------------|-----------|---------------------|-----|
| Ratio i:1 | Max. motor shaft-ØD | Ratio i:1 | Max. motor shaft-ØD | Ratio i:1 | Max. motor shaft-ØD | |
| | | | | 64 | 6 | |
| | | | | 72 | 6 | |
| | | 81 | 6 | 100 | 6 | |
| | | 12.08 | 6 | 130 | 6 | |
| | | 16 | 6 | 144 | 6 | |
| | | 18 | 6 | 175.78 | 5 | |
| | | 20.8 | 6 | 200 | 6 | |
| | | 25 | 6 | 225 | 5 | |
| 29 | 6 | | | | | |
| 4 | 6 | 32 | 6 | 256 | 6 | |
| 4.5 | 5 | 36 | 5 | 288 | 5 | |
| 5.2 | 4 | 41.6 | 4 | 332.8 | 4 | |
| 6.25 | 3 | 50 | 3 | 400 | 3 | |
| 8 | 2 | 64 | 2 | 512 | 2 | |
| Rated torque continuous | Type Standard | Type R | Nm | 0.4 | 2 | 6 |
| Rated torque intermittent | Type Standard | Type R | Nm | 0.8 | 4 | 12 |
| Rated torque continuous | Type V | Type S | Nm | 0.8 | 4 | 6 |
| Rated torque intermittent | Type V | Type S | Nm | 1.6 | 6 | 12 |
| Max. efficiency at rated torque | | | % | 90 | 85 | 80 |
| Average backlash at no load | Type Standard | Type V | arcmin ≤ | 20 | 35 | 50 |
| Average backlash at no load | Type R | | arcmin ≤ | 12 | 20 | 30 |
| Average backlash at no load | Type S | | arcmin ≤ | 8 | 12 | 15 |
| Weight without adapter plate | | | g | 135 | 180 | 250 |
| Dimension L | | | mm | 29 | 38 | 47 |
| Dimension A | | | mm | | 5.25 | |
| Dimension B | | | mm | | 16.25 | |
| Max. radial load | FR | 8 mm from shaft end | N | | 80 | |
| Max. axial load | FA | | N | | 65 | |
| Max. continuous rated speed at drive | | | min ⁻¹ | | 5000 | |
| Max. intermittent rated speed at drive | | | min ⁻¹ | | 8000 | |
| Temperature range | Type Standard | Type R | °C | | -30 / +90 | |
| Temperature range | Type V | Type S | °C | | -40 / +90 | |

Type V = heavy duty version | Type R = reduced backlash version | Type S = low backlash version

Changes reserved © GYSIN AG | 05/2015